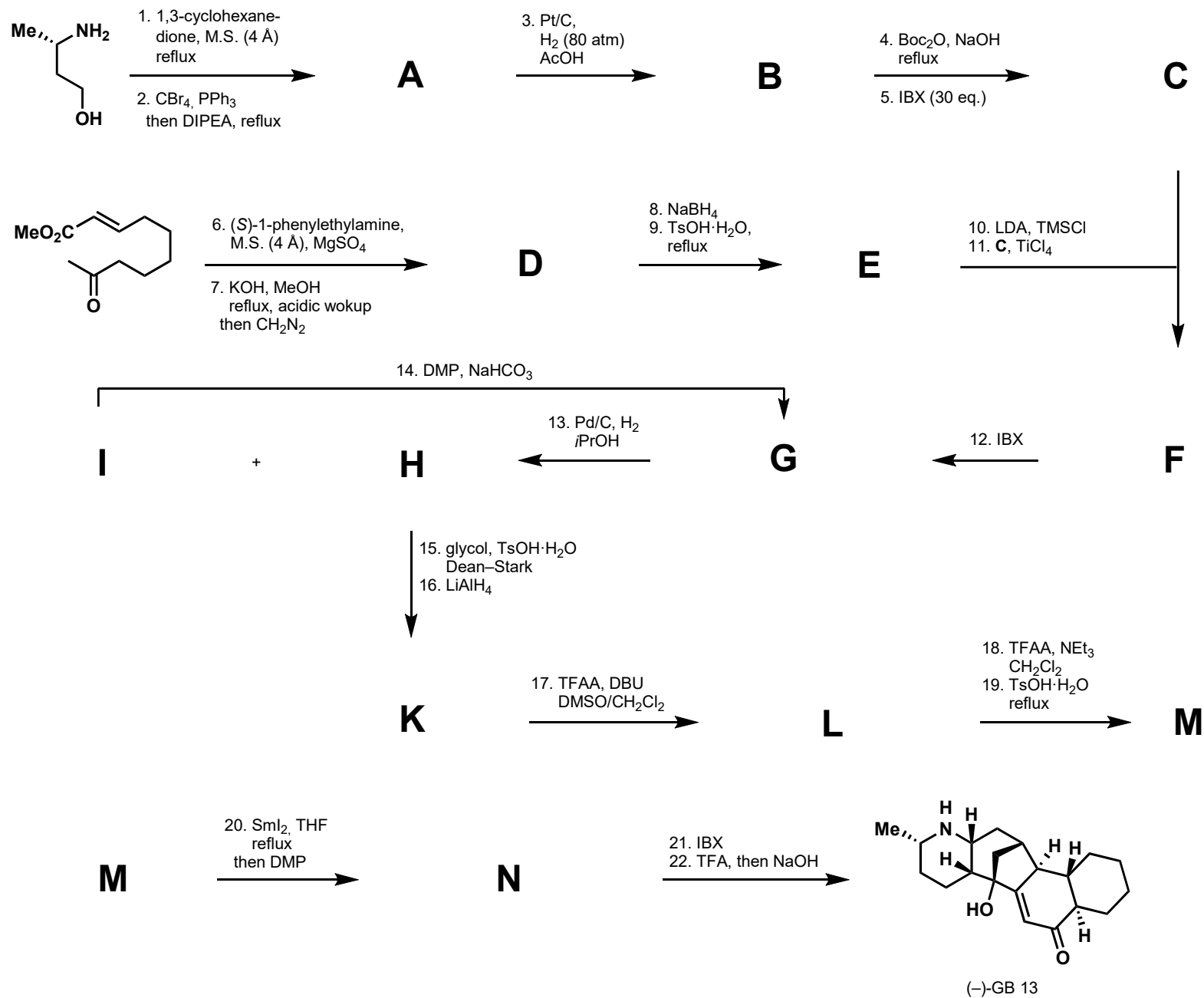


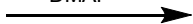
# Convergent Route to *Galbulimima* Alkaloids (–)-GB 13 and (+)-GB 16

25.10.17



**H**

23. NaBH<sub>4</sub>  
24. TBSCl, Im,  
DMAP



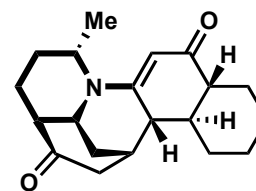
**O**

25. LiAlH<sub>4</sub>  
26. TFAA, DBU  
DMSO/CH<sub>2</sub>Cl<sub>2</sub>  
27. HF  
28. PCC



**P**

29. TFA  
30. NaOAc, PhMe  
Dean-Stark, reflux



(+)-GB 16