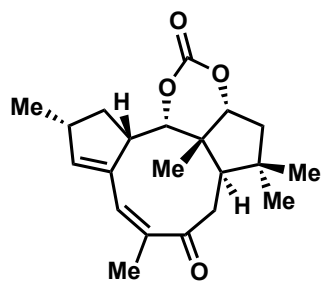
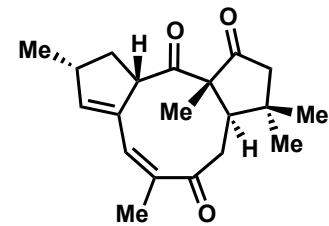


ad) BCl_3 , DCM (85%)
ae) $\text{Im}_2\text{C}=\text{S}$, 1,2-Dichlorobenzene, Δ
(37%)

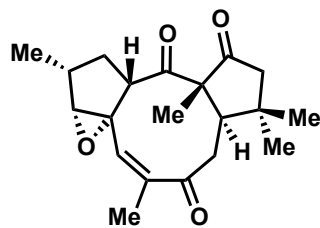


af) K_2CO_3 , MeOH (88%)
ag) IBX, DMSO (69%)



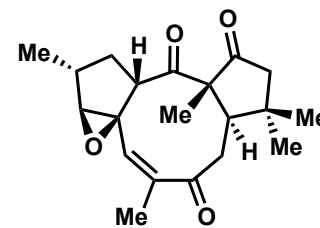
Jatrophatrione

ah) *m*CBPA, DCM



67%

+



Citlitrione
22%