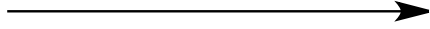
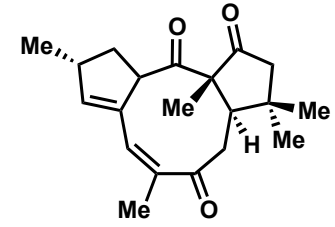
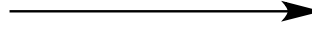


ad)  $\text{BCl}_3$ , DCM (85%)  
ae)  $\text{Im}_2\text{C}=\text{S}$ , 1,2-Dichlorobenzene,  $\Delta$   
(37%)



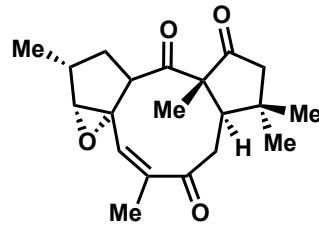
M

af)  $\text{K}_2\text{CO}_3$ , MeOH (88%)  
ag) IBX, DMSO (69%)



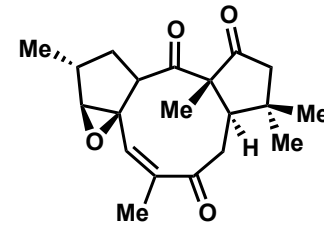
Jatrophatrione

ah) *m*CBPA, DCM



67%

+



Citralitrione  
22%